

JARLIN CABINETS



PRODUCT CATALOG 2021

Jarlin Cabinetry is a leading wholesaler and distributor of quality all-wood kitchen and bath cabinetry for remodeling and new home construction markets. Our products are sold through a network of independent dealers and distributors or directly to major builders and contractors.

With our solid wood construction, superior hardware, durable finishes, cabinetry lines and unique design features, we provide a wide variety at an affordable price. Our cabinets are ideal for homeowners who want a dream kitchen that's elegant, unique and cost effective. Quality is fundamental to our business! Feel free to browse our online gallery.

With a well-stocked warehouse located in Fort Lauderdale, Florida, and warehouses around the country, your orders will be shipped accurately and quickly. We are continually expanding with new cabinet lines and more warehouse locations. Look for our new branch now open in City of Industry, CA.



Fort Lauderdale, FL



City of Industry, CA

TABLE OF CONTENTS

Cabinet Door Styles	3-7
Superior Cabinet Construction	8
Wood Species And Characteristics	9
Our Process To Create A Fine Furniture Finish	10
NKBA Kitchen Guidelines	11-12
Cabinet Dimensions	13-14
Installation Guidelines	15-17
Kitchen Gallery	18-30
How To Use Product Specification Catalog	31
Base Cabinet Specifications	32-36
Wall Cabinet Specifications	37-40
Pantry Specifications	41
Vanities Specifications	42-44
Specialty Cabinets, Mouldings & Accessories Specifications	45-58
Glass Door & Deco Door Specifications	59-61
Cabinet Cleaning & Care	67
Policies & General Information	68-70
Warranty Information	71

CABINET DOOR STYLES



Wall Cabinet Door



Base Cabinet Door

Charlton Model: CT

- Finish: Coffee Color
- 1/2" Thick Grade Plywood Box Construction
- Raised Center Panel Door
- Full Extension Soft-Closing Under-Mount Glide System
- European Style Fully Concealed Soft-Closing Hinges
- Five Piece Door and Drawer Face
- 3/4" Adjustable Shelves
- Clear Coated Natural Maple Finish Interior
- Full Overlay Doors and Drawers



Wall Cabinet Door



Base Cabinet Door

Perla Model: PE

- Finish: Cream White Color
- 1/2" Thick Grade Plywood Box Construction
- Raised Center Panel Door
- Full Extension Soft-Closing Under-Mount Glide System
- European Style Fully Concealed Soft-Closing Hinges
- Five Piece Door and Drawer Face
- 3/4" Adjustable Shelves
- Clear Coated Natural Maple Finish Interior
- Full Overlay Doors and Drawers

CABINET DOOR STYLES



Wall Cabinet Door



Base Cabinet Door

Newport Model: NT

- Finish: Cinnamon Color
- 1/2" Thick Grade Plywood Box Construction
- Raised Center Panel Door
- Full Extension Soft-Closing Under-Mount Glide System
- European Style Fully Concealed Soft-Closing Hinges
- Five Piece Door and Drawer Face
- 3/4" Adjustable Shelves
- Clear Coated Natural Maple Finish Interior
- Full Overlay Doors and Drawers



Wall Cabinet Door



Base Cabinet Door

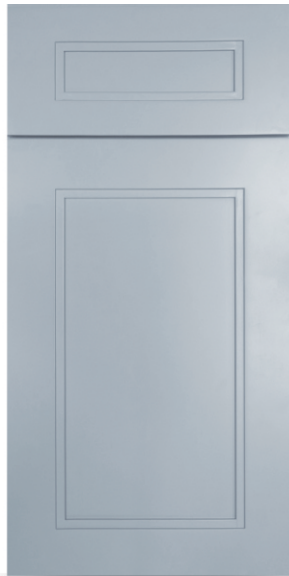
Avalon Model: AL

- Finish: Off White Color
- 1/2" Thick Grade Plywood Box Construction
- Raised Center Panel Door
- Full Extension Soft-Closing Under-Mount Glide System
- European Style Fully Concealed Soft-Closing Hinges
- Five Piece Door and Drawer Face
- 3/4" Adjustable Shelves
- Clear Coated Natural Maple Finish Interior
- Full Overlay Doors and Drawers

CABINET DOOR STYLES



Wall Cabinet Door



Base Cabinet Door

Sterling Model: SG

- Finish: Gray Color
- 1/2" Thick Grade Plywood Box Construction
- Reversed Raised Center Panel Door
- Full Extension Soft-Closing Under-Mount Glide System
- European Style Fully Concealed Soft-Closing Hinges
- Five Piece Door and Drawer Face
- 3/4" Adjustable Shelves
- Clear Coated Natural Maple Finish Interior
- Full Overlay Doors and Drawers



Wall Cabinet Door



Base Cabinet Door

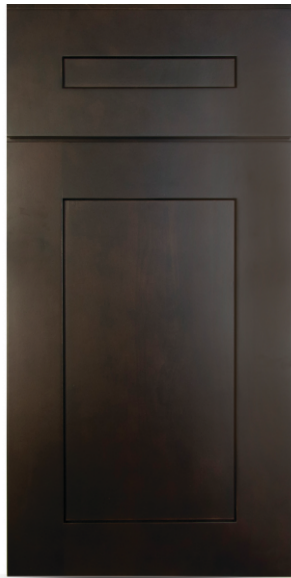
Soda Model: SO

- Finish: White Color
- 1/2" Thick Grade Plywood Box Construction
- Reversed Raised Center Panel Door
- Full Extension Soft-Closing Under-Mount Glide System
- European Style Fully Concealed Soft-Closing Hinges
- Five Piece Door and Drawer Face
- 3/4" Adjustable Shelves
- Clear Coated Natural Maple Finish Interior
- Full Overlay Doors and Drawers

CABINET DOOR STYLES



Wall Cabinet Door



Base Cabinet Door

Ebony Shaker Model: ES

- Finish: Espresso Color
- 1/2" Thick Grade Plywood Box Construction
- Reversed Raised Center Panel Door
- Full Extension Soft-Closing Under-Mount Glide System
- European Style Fully Concealed Soft-Closing Hinges
- Five Piece Door and Drawer Face
- 3/4" Adjustable Shelves
- Clear Coated Natural Maple Finish Interior
- Full Overlay Doors and Drawers



Wall Cabinet Door



Base Cabinet Door

Dove White Shaker Model: DS

- Finish: Dove White Color
- 1/2" Thick Grade Plywood Box Construction
- Reversed Raised Center Panel Door
- Full Extension Soft-Closing Under-Mount Glide System
- European Style Fully Concealed Soft-Closing Hinges
- Five Piece Door and Drawer Face
- 3/4" Adjustable Shelves
- Clear Coated Natural Maple Finish Interior
- Full Overlay Doors and Drawers

CABINET DOOR STYLES



Wall Cabinet Door



Base Cabinet Door

Smoky Gray Model: SM

- Finish: Stained Gray Color
- 1/2" Thick Grade Plywood Box Construction
- Reversed Raised Center Panel Door
- Full Extension Soft-Closing Under-Mount Glide System
- European Style Fully Concealed Soft-Closing Hinges
- Five Piece Door and Drawer Face
- 3/4" Adjustable Shelves
- Clear Coated Natural Maple Finish Interior
- Full Overlay Doors and Drawers



Wall Cabinet Door

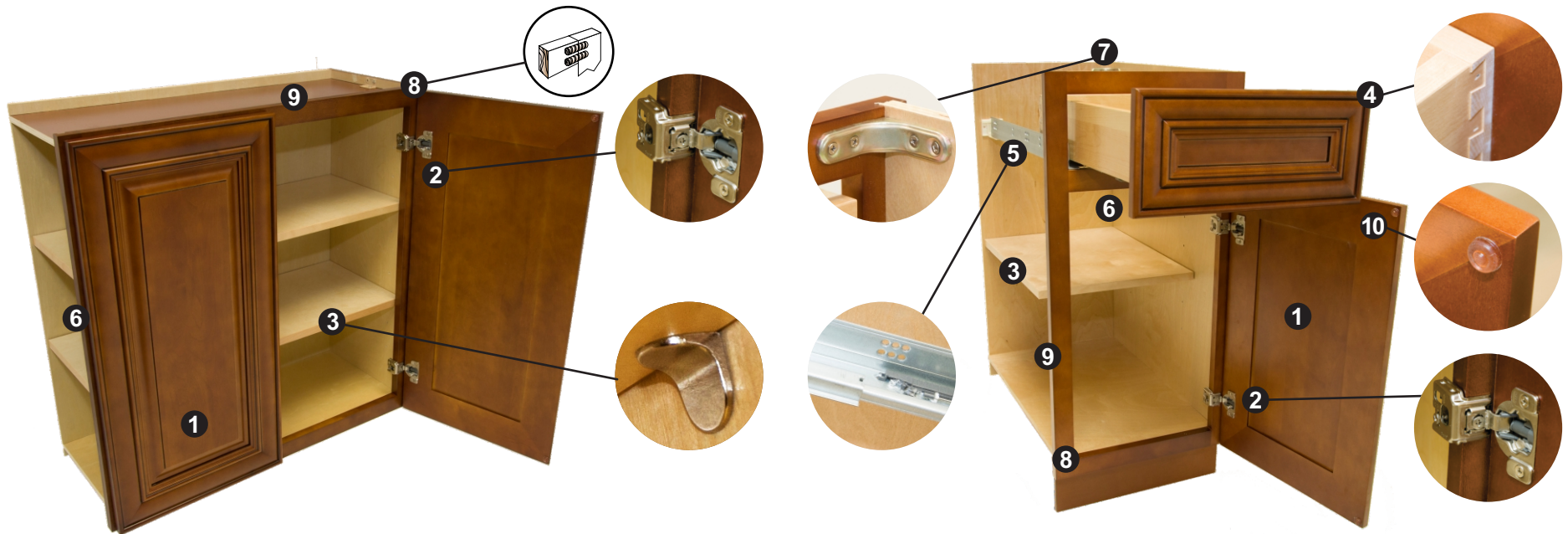


Base Cabinet Door

Aria Blue Model: AB

- Finish: Blue Color
- 1/2" Thick Grade Plywood Box Construction
- Reversed Raised Center Panel Door
- Full Extension Soft-Closing Under-Mount Glide System
- European Style Fully Concealed Soft-Closing Hinges
- Five Piece Door and Drawer Face
- 3/4" Adjustable Shelves
- Clear Coated Natural Maple Finish Interior
- Full Overlay Doors and Drawers

SUPERIOR CABINET CONSTRUCTION



- ① Full Overlay Doors and Drawers, 3/4" Thick Panels
- ② 6 Way Adjustable European Style Fully Concealed Soft-Closing Hinges
- ③ Adjustable 3/4" Shelf, 1/2" Thick Cabinet Grade Plywood, Metal Shelf Rests, 18" deep base shelf
- ④ Dovetail Drawer 5/8" Thick Solid Wood Side Panels Without Finger Joints
- ⑤ Full Extension Soft-Closing Under-Mount Concealed Glide System
- ⑥ 1/2" Thick Grade Plywood Box Construction
- ⑦ Metal Brackets Reinforcements for Base Cabinets
- ⑧ Double Doweled Face Frame Joint
- ⑨ 3/4" x 1 1/2" Hardwood Face Frame
- ⑩ Door Bumper

WOOD SPECIES AND CHARACTERISTICS



ALDER



CHERRY



HICKORY



MAPLE



OAK

When you choose your new kitchen or bath cabinetry, please keep in mind that no two pieces of wood are exactly the same. Stains are likely to exaggerate the difference between open and closed grains and other markings in wood. Grain variation and color change should be expected. As hardwood ages, it will darken when exposed to different types of light. Color differences or changes in wood can also be caused by exposure to harsh chemicals, extreme heat or moisture. Additionally, wood species exhibit other defining characteristics, such as mineral deposits/streaks, knots, sap runs, pin holes and wormholes. These markings make the wood unique and contribute to its enduring beauty.

Alder has a straight fine textured grain similar to Cherry and Maple. Although classified as a hardwood, it is moderately light in weight and considerably softer than other species. Therefore, care must be taken as it will dent and mar easily. Alder may exhibit grain and color variations, sapwood can be distinguishable from the heartwood, tight pin knots are sometimes present.

Cherry is characterized by its red undertones, but may vary in color from white to a deep, rich brown. Cherry is a close-grained wood with fairly uniform texture, revealing pin knots and curly graining. All wood will age with time and the finish will darken. This is especially true for Cherry. This is a sought-after quality in Cherry cabinetry, and those who select it expect this evolution.

Hickory is a strong, heavy hardwood known for distinctive graining patterns. Contributing to its dramatic appearance is a wide variation in color and streaking, ranging from white to dark brown. This contrast in color can appear in a single door panel. Hickory also contains random knots and wormholes that further contribute to a varied appearance. These exaggerated characteristics are to be expected and are considered desirable in Hickory cabinetry.

Maple is a close-grained hardwood that is predominately white to creamy-white in color, with occasional reddish-brown tones. While Maple typically features uniform graining as compared to other wood species, characteristic markings may include fine brown lines, wavy or curly graining, bird pecks and mineral streaks. These traits are natural and serve to enhance Maple's natural beauty.

Oak is a strong, open-grained hardwood that ranges in color from white to pink and reddish tones. Streaks of green, yellow and even black may appear due to mineral deposits. Oak may also contain wormholes and wild, varying grain patterns. This distinct graining is considered a desirable quality.

OUR PROCESS TO CREATE A FINE FURNITURE FINISH

1. Wood Selection

The first step to select the finest wood for the component parts to ensure that they meet our high standards. High quality raw materials are the basis for a fine furniture finished product.

2. Sanded to Perfection

All the doors are sanded to assure that all parts of the wood will take the finish uniformly and evenly assuring consistent color.

3. Cleaning

Each part is cleaned of dust and debris prior to entering the stain booth on a wood surface that is free of dust particles.

4. Staining/Painting

The penetrating stain or paint is hand applied utilizing processes to make sure that the color is uniformly distributed.

5. Color Inspection

The stained or painted product goes through a color inspection station to assure that all parts of the kitchen will be uniform in color.

6. Drying

The product is then oven dried to ensure all parts are fully dry prior to sealing.

7. Sealer Coat

The seal coat provides a base for the top coat by filling in any open pores in the wood, allowing the top coat to go on uniformly and evenly.

8. Drying

The seal coat is oven cured for uniform hardness and drying. This prevents finish problems like crackling and peeling.

9. Hand Sanded

The parts are lightly touch sanded with a fine grit sandpaper to prevent any raised grain or roughness. This allows for a more uniform build up in the top coat.

10. Dust Removal

After sanding the parts are cleaned of any debris. This ensures no dust is in the top coat.

11. Top Coat

A premium quality catalyzed clear top-coat is applied to protect the wood from environmental elements.

12. Drying

The top coat is oven cured. This chemically locks in the properties of the top coat finalizing the finish quality.

13. Final Inspection

All product goes through a final inspection in the finish area assuring consistent color and finish quality.

Additional Finish Steps for Glazed Product

- 1.** After the seal sanding and cleaning the glaze is hand applied.
- 2.** The glazed product is placed on a rack to air dry.
- 3.** The product then goes through the top coat, drying and inspection steps.



- 1. Door/Entry:** A doorway should be at least 32 inches wide.
- 2. Door Interference:** No entry door should interfere with appliances, nor should appliance doors interfere with one another.
- 3. Distance Between Work Centers:** In a kitchen with three work centers*, the sum of the distances between them should total no more than 26 feet. No leg of the work triangle should measure less than 4 feet nor more than 9 feet. When the kitchen includes additional work centers, each additional distance should measure no less than 4 feet nor more than 9 feet. No work triangle leg should intersect an island or peninsula by more than 12 inches.

* The distances between the three primary work centers (cooking, cleanup/prep and refrigeration) form a **work triangle**.
- 4. Separating Work Centers:** A full-height, full-depth, tall obstacle [i.e., a pantry cabinet or refrigerator] should not separate two primary work centers.
- 5. Work Triangle Traffic:** No major traffic patterns should cross through the work triangle.
- 6. Work Aisle:** The width of a work aisle should be at least 42 inches for one cook and at least 48 inches for multiple cooks.
- 7. Walkway:** The width of a walkway should be at least 36 inches.
- 8. Traffic Clearance at Seating:** In a seating area where no traffic passes behind a seated diner, allow 32 inches of clearance from the counter/table edge to any wall or other obstruction behind the seating area. If traffic passes behind the seated diner, allow at least 36 inches to edge past or at least 44 inches to walk past.
- 9. Seating Clearance:** Kitchen seating areas should incorporate at least the following clearances: At 30-inch-high tables/counters, allow a 24-inch-wide by 18-inch-deep knee space for each seated diner. At 36-inch-high counters, allow a 24-inch-wide by 15-inch-deep knee space. At 42-inch-high counters, allow a 24-inch-wide by 12-inch-deep knee space.
- 10. Cleanup/Prep Sink Placement:** If a kitchen has only one sink, locate it adjacent to or across from the cooking surface and refrigerator.
- 11. Cleanup/Prep Sink Landing Area:** Include at least a 24-inch-wide landing area to one side of the sink and at least an 18-inch-wide landing area on the other side.
- 12. Preparation/Work Area:** Include a section of continuous countertop at least 36 inches wide and 24 inches deep immediately next to a sink.
- 13. Dishwasher Placement:** Locate nearest edge of the primary dishwasher within 36 inches of the nearest edge of a sink. Provide at least 21 inches of standing space between the edge of the dishwasher and countertop frontage, appliances and/or cabinets placed at a right angle to the dishwasher.
- 14. Waste Receptacles:** Include at least two waste receptacles. Locate one near the sink(s) and a second for recycling in the kitchen or nearby.
- 15. Auxiliary Sink:** At least 3 inches of countertop frontage should be provided on one side of the auxiliary sink and 18 inches on the other side.

16. Refrigerator Landing Area: Include at least 15 inches of landing area on the handle side of the refrigerator or 15 inches of landing area on either side of a side-by-side refrigerator or 15 inches of landing area no more than 48 inches across from the front of the refrigerator or 15 inches of landing area above or adjacent to any undercounter refrigeration appliance.

17. Cooking Surface Landing Area: Include a minimum of 12 inches of landing area on one side of a cooking surface and 15 inches on the other side. In an island or peninsula, the countertop should also be extended a minimum of 9 inches behind the cooking surface.

18. Cooking Surface Clearance: Allow 24 inches of clearance between the cooking surface and a protected noncombustible surface [e.g., a range hood] above it. At least 30 inches of clearance is required between the cooking surface and an unprotected/combustible surface [e.g., cabinetry] above it. If a microwave hood is used, then the manufacturer's specifications should be followed.

19. Cooking Surface Ventilation: Provide a correctly sized, ducted ventilation system for all cooking surface appliances; the recommended minimum is 150 CFM.

20. Cooking Surface Safety: Do not locate the cooking surface under an operable window. Window treatments above the cooking surface should not use flammable materials. A fire extinguisher should be located near the exit of the kitchen away from cooking equipment.

21. Microwave Oven Placement: The ideal location for the bottom of the microwave is 3 inches below the principle user's shoulder but no more than 54 inches above the floor. If the microwave is below the countertop the bottom must be at least 15 inches off the finished floor.

22. Microwave Landing Area: Provide at least a 15-inch landing area above, below or adjacent to the handle side of a microwave.

23. Oven Landing Area: Include at least a 15-inch landing area next to or above the oven. At least a 15-inch landing area not more than 48 inches across from the oven is acceptable if the appliance does not open into a walkway.

24. Combining Landing Areas: If two landing areas are adjacent, determine a new minimum by taking the longer of the two landing area requirements and adding 12 inches.

25. Countertop Space: A total of 158 inches of countertop frontage, 24 inches deep, with at least 15 inches of clearance above, is needed to accommodate all uses.

26. Countertop Edges: Specify clipped or round corners rather than sharp edges.

27. Storage: The total shelf/drawer frontage is: 1,400 inches for a small kitchen (150 square feet or less); 1,700 inches for a medium kitchen (151 to 350 square feet); and 2,000 inches for a large kitchen (351 square feet or more). ***See Chart.**

28. Storage at Cleanup/Prep Sink: Of the total recommended shelf/drawer frontage, the following should be located within 72 inches of the centerline of the main cleanup/prep sink: at least 400 inches for a small kitchen; at least 480 inches for a medium kitchen; and at least 560 inches for a large kitchen.

29. Corner Cabinet Storage: At least one corner cabinet should include a functional storage device. This does not apply if there are no corner cabinets.

30. Electrical Receptacles: GFCI (ground fault circuit interrupter) protection is required on all receptacles servicing countertop surfaces.

31. Lighting: Every work surface should be well-illuminated by appropriate task lighting.

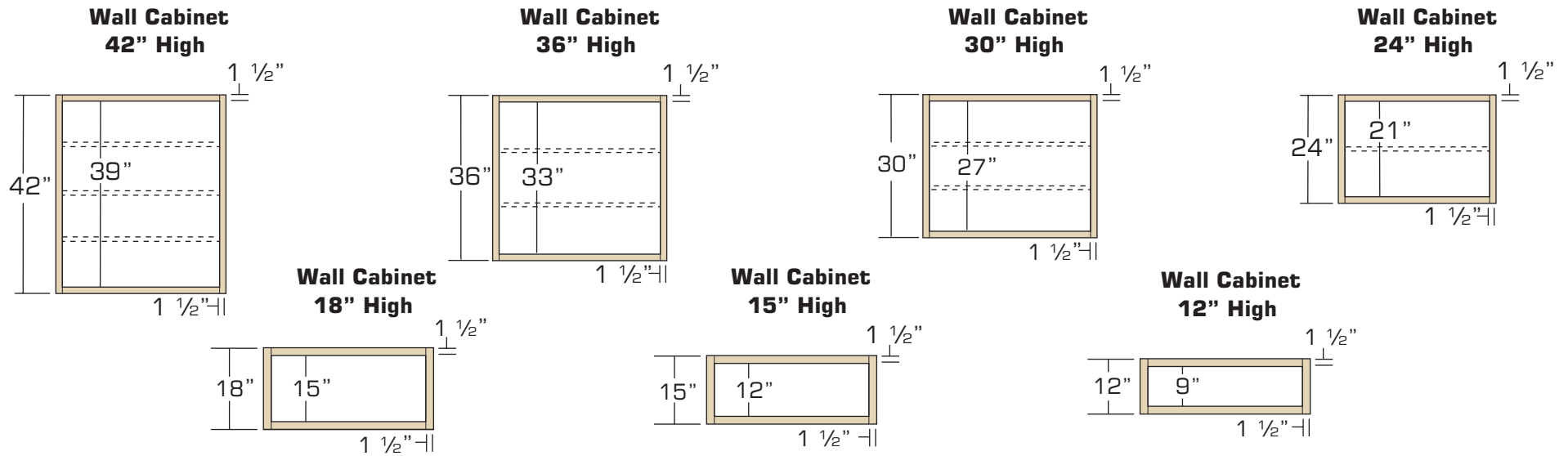
	Small	Medium	Large
Wall	300 in.	360 in.	360 in.
Base	520 in.	615 in.	660 in.
Drawer	360 in.	400 in.	525 in.
Pantry	180 in.	230 in.	310 in.
Misc.	40 in.	95 in.	145 in.

***See line 27** - The recommended distribution for the shelf/drawer frontage is:

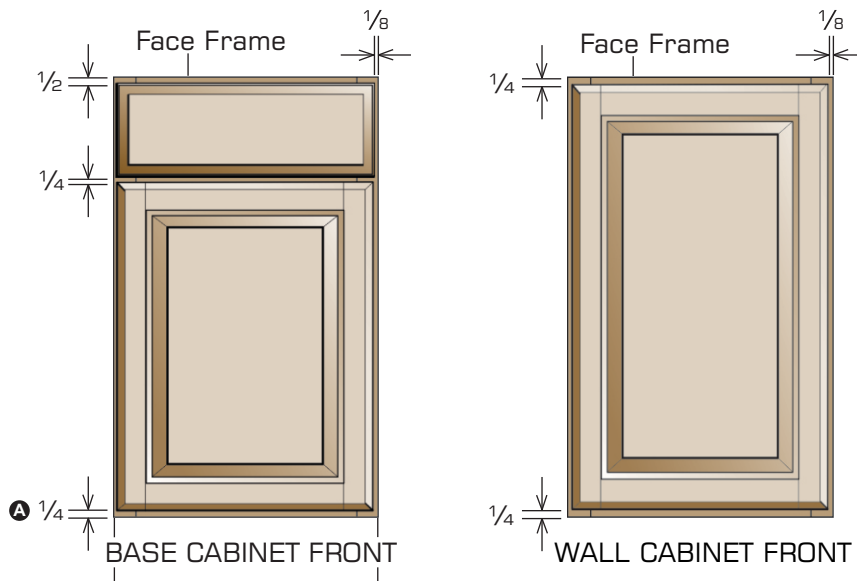
CABINET SPECIFICATIONS: WALL CABINET DIMENSIONS

STANDARD CABINET SPECIFICATIONS: WALL CABINET DIMENSIONS

These illustrations specify dimensions of horizontal rails, cabinet heights and standard interior opening heights for Wall cabinets. **Wall Top Hinge and Butt door cabinets do not have a center stile.**



STANDARD CABINET SPECIFICATIONS: OVERLAY DIMENSIONS



Full Overlay

Doors are sized to cover nearly all of the cabinet face frame. Full Overlay door styles require decorative hardware. **To facilitate proper door operation, include at least a 1" filler between the hinged side of Full Overlay door styles and deeper adjacent objects including cabinets, walls, appliances and countertops.**

Note: **A**

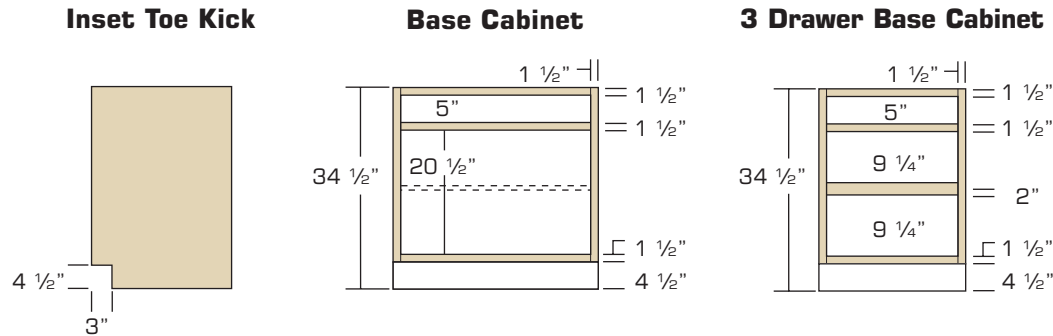
NT, CT & PE = 0"

ES, DS & SG = 1/4"

CABINET SPECIFICATIONS: CABINET DIMENSIONS

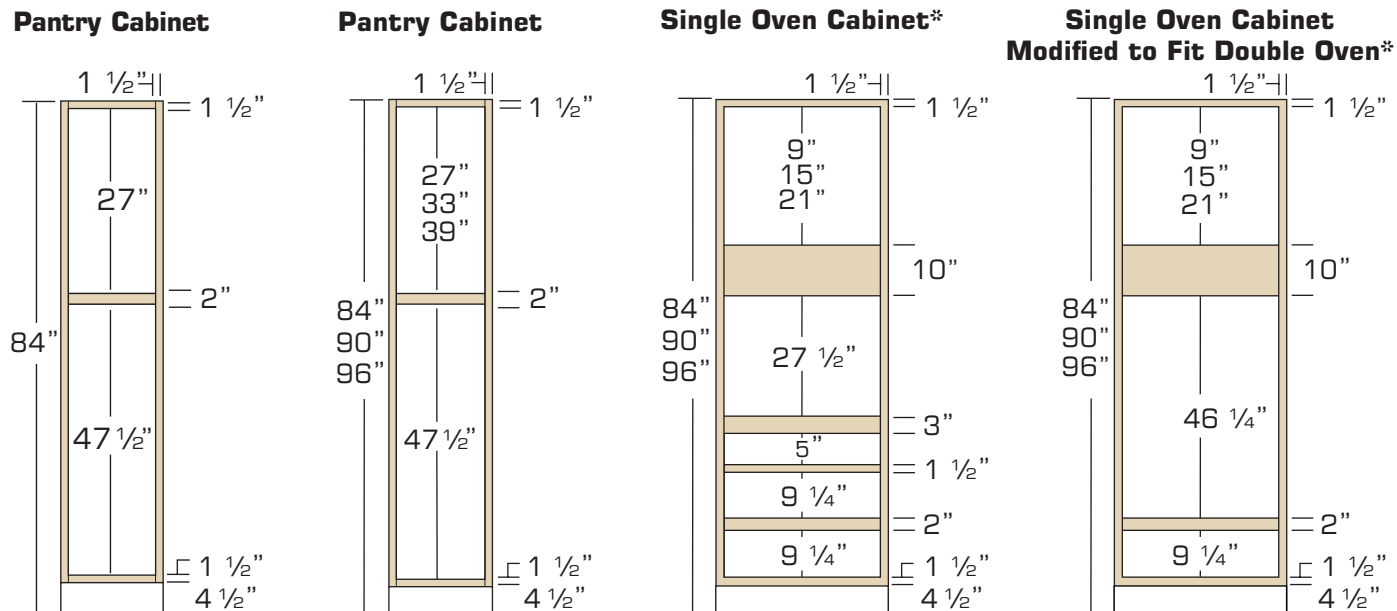
STANDARD CABINET SPECIFICATIONS: BASE & VANITY CABINET DIMENSIONS

These illustrations specify dimensions of horizontal rails, inset toe kick, cabinet heights and standard interior opening heights for Base & Vanity cabinets. Butt door cabinets do not have a center stile.

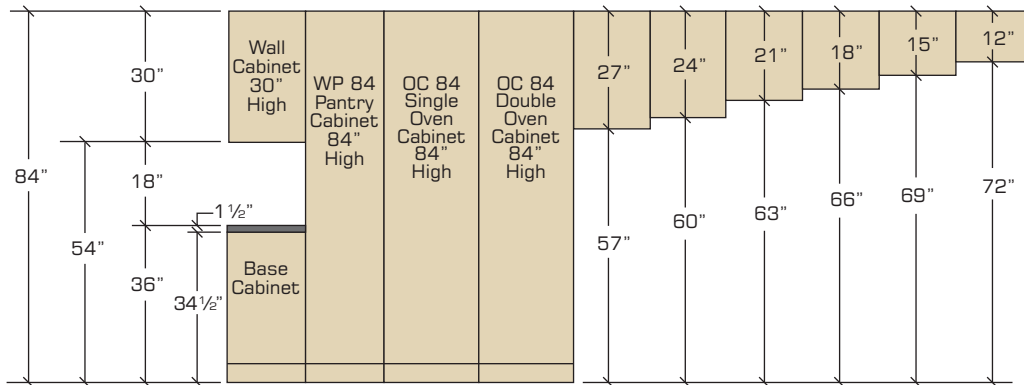


STANDARD CABINET SPECIFICATIONS: TALL CABINET DIMENSIONS

*Actual height of oven opening shown. Single oven cabinet is also designed to be used as a double oven cabinet by taking out first two drawers on the top to enlarge opening to accommodate double oven.

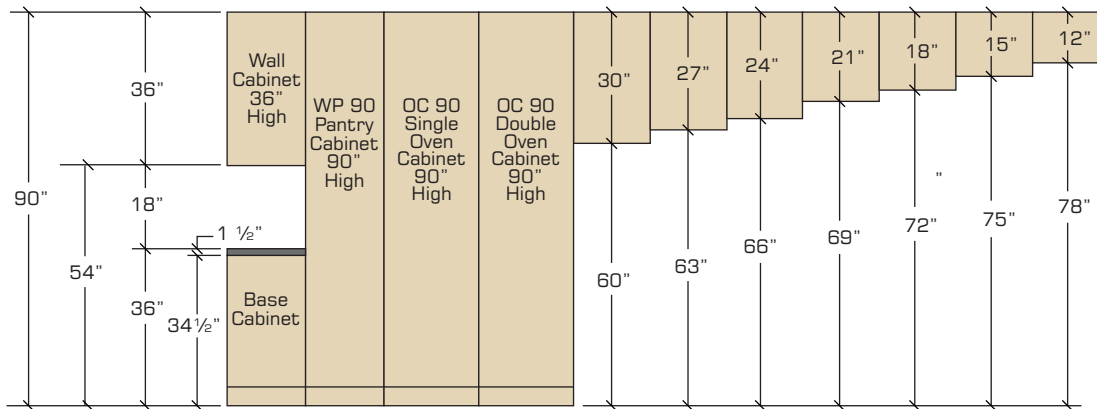


CABINET SPECIFICATIONS: INSTALLATION GUIDELINES



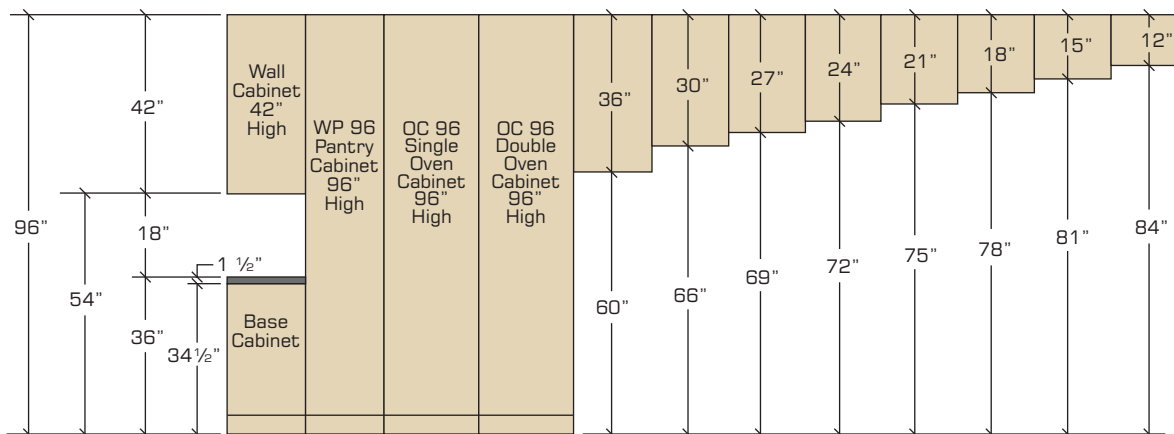
84" Top Alignment Cabinet Installation

- 84" top alignment cabinet installation includes standard Wall cabinets (30" high) installed 54" above the finished floor, allowing 18" clearance between the Wall cabinets and a standard countertop height of 36".
- Tall cabinetry (Linen, Pantry, Oven) is 84" high.
- When selecting cabinetry for installation above or near any appliance, refer to the appliance manufacturer's specifications for clearance and venting requirements.



90" Top Alignment Cabinet Installation

- 90" top alignment cabinet installation includes taller Wall cabinets (36" high) installed 54" above the finished floor, allowing 18" clearance between the Wall cabinets and a standard countertop height of 36".
- Tall cabinetry (Pantry, Oven) is 90" high.
- When selecting cabinetry for installation above or near any appliance, refer to the appliance manufacturer's specifications for clearance and venting requirements.

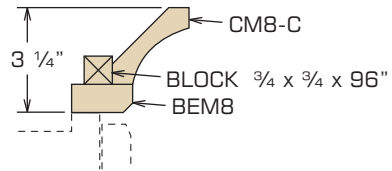
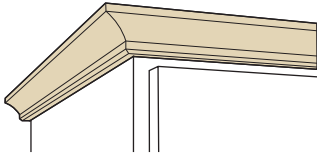


96" Top Alignment Cabinet Installation

- 96" top alignment cabinet installation includes full-height Wall cabinets (42" high) installed 54" above the finished floor, allowing 18" clearance between the Wall cabinets and a standard countertop height of 36".
- Tall cabinetry (Pantry, Oven) is 96" high.
- When selecting cabinetry for installation above or near any appliance, refer to the appliance manufacturer's specifications for clearance and venting requirements.

CROWN MOULDING: INSTALLATION GUIDELINES

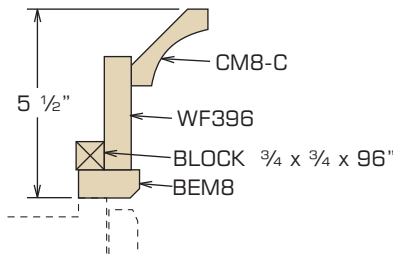
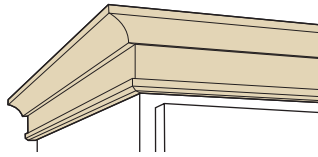
CONTEMPORARY A



AVAILABLE IN DS, ES & SG

Molding Stacks to be cut, assembled and installed at job site.

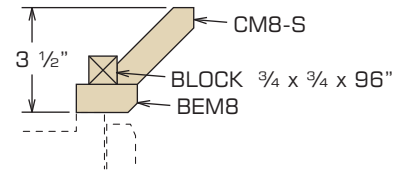
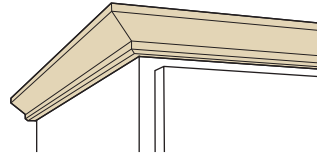
CONTEMPORARY B



AVAILABLE IN DS, ES & SG

Molding Stacks to be cut, assembled and installed at job site.

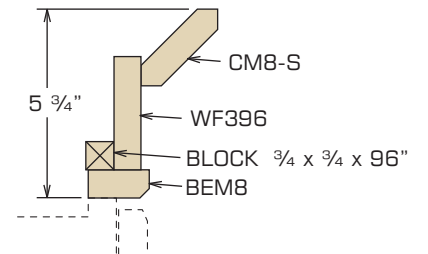
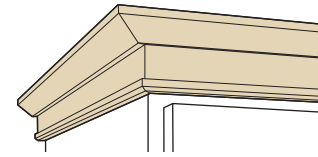
CONTEMPORARY C



AVAILABLE IN DS, ES & SG

Molding Stacks to be cut, assembled and installed at job site.

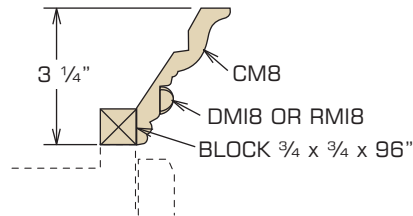
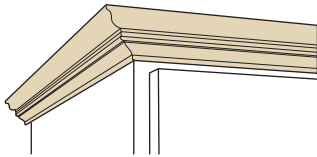
CONTEMPORARY D



AVAILABLE IN DS, ES & SG

Molding Stacks to be cut, assembled and installed at job site.

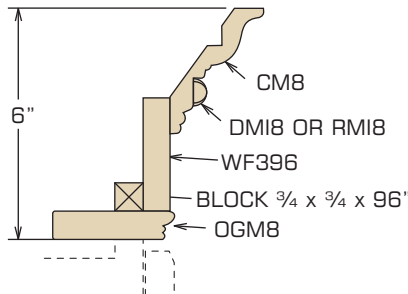
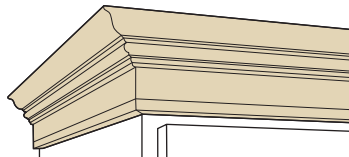
TRADITIONAL A



AVAILABLE IN CT, PE & NT

Molding Stacks to be cut, assembled and installed at job site.

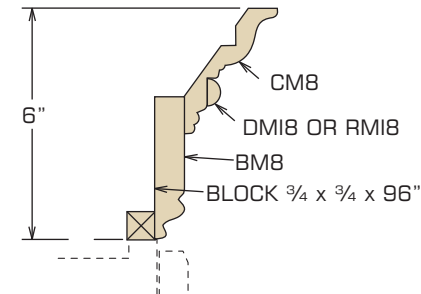
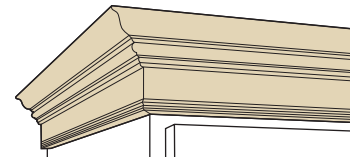
TRADITIONAL B



AVAILABLE IN CT, PE & NT

Molding Stacks to be cut, assembled and installed at job site.

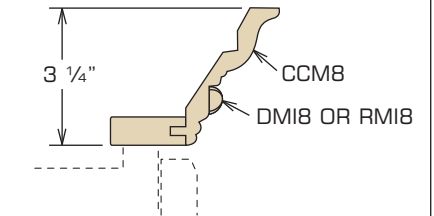
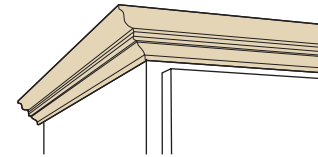
TRADITIONAL C



AVAILABLE IN CT, PE & NT

Molding Stacks to be cut, assembled and installed at job site.

TRADITIONAL D

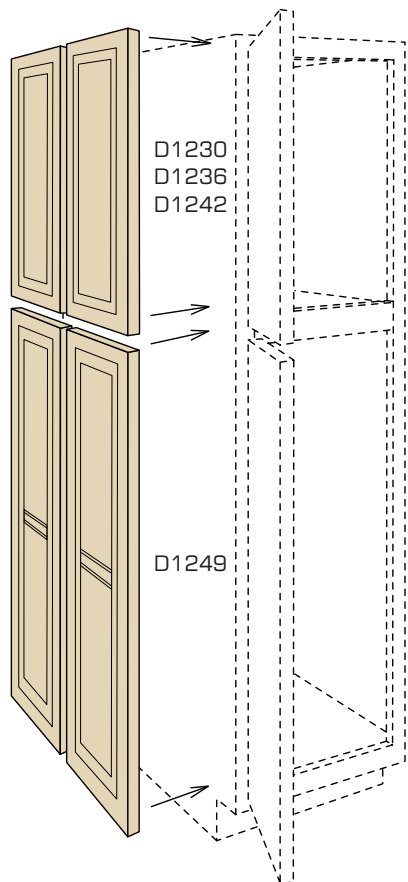


AVAILABLE IN CT, PE & NT

Molding Stacks to be cut, assembled and installed at job site.

SPECIALTY CABINETS: INSTALLATION GUIDELINES

DECORATOR MATCHING DOORS TALL CABINETS



Attaches to side of Base Cabinet

Matches style and color of cabinet doors

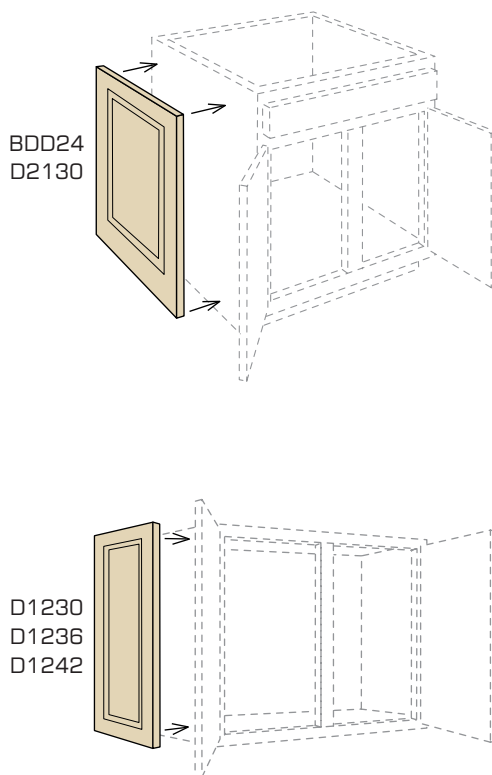
Panel thickness is $\frac{3}{4}$ "

Refer to the Accessories section of this guide for dimensions

AVAILABLE IN ALL CABINET FINISHES

Decorator Matching Doors are not sized for Reduced Depth or Increased Depth cabinets.

DECORATOR MATCHING DOORS BASE OR VANITY CABINETS



Attaches to side of Base Cabinet

Matches style and color of cabinet doors

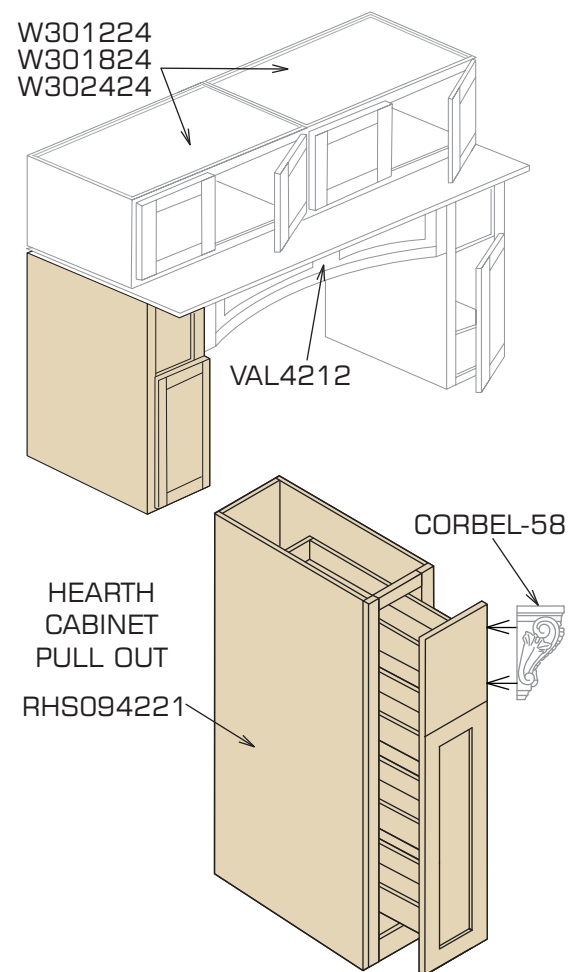
Panel thickness is $\frac{3}{4}$ "

Refer to the Accessories section of this guide for dimensions

AVAILABLE IN ALL CABINET FINISHES

Decorator Matching Doors are not sized for Reduced Depth or Increased Depth cabinets.

MANTEL WITH HEARTH CABINET PULL OUT



HEARTH CABINET PULL OUT

RHS094221

AVAILABLE IN ALL CABINET FINISHES

Multiple widths based on size of valance
36", 42", 48", 60"



Pure Dove White Shaker Style Door Panel



Ebony Shaker Style Door Panel



Ivory Color Miter Style Door Panel



Coffee Color Miter Style Door Panel



Sterling Shaker Style Door Panel



Cinnamon Color Miter Style Door Panel



Off White Raised Style Door Panel



Pure White Soda Style Door Panel-Double Edge

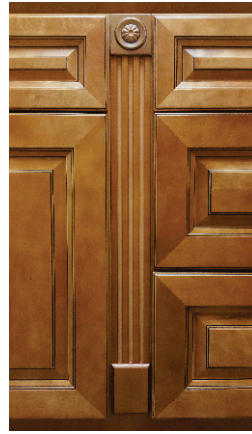


Stained Gray Style Door Panel-Double Edge

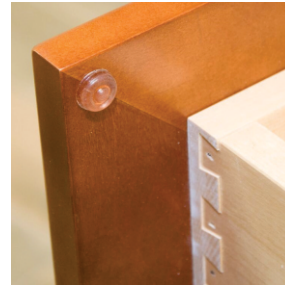


Blue Color Shaker Style Door Panel

SPECIALTY CABINETS & ACCESSORIES



SPECIALTY CABINETS & ACCESSORIES



SPECIALTY CABINETS & ACCESSORIES

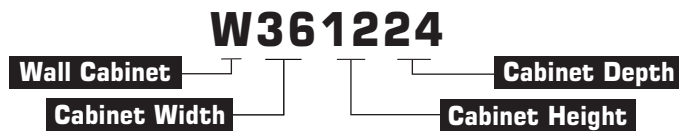


The cabinet Specifications catalog combines product information, illustrations and features all into one easy-to-use reference manual.

How to Read a Cabinet Product Code

Wall Cabinets

Wall cabinets are listed by item code, width and height. Thus the first number 24 is the width and the second number 30 is the height. The third number is the depth. The standard depth of a wall cabinet is 12" deep and therefore is not listed in the code.



Base Cabinets

The standard height of a base cabinet is 34 1/2" and the depth 24". Base cabinets are listed by item code and width only, thus the 24 in this example is the width.

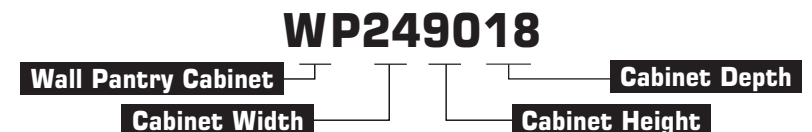


Tall Cabinets

The tall cabinet width is always listed first and height is always the last two numbers. Thus 24" is the width and 90" is the height. Since most tall cabinets are 24" deep we only list the cabinet depth when it is not 24" as in the following example.



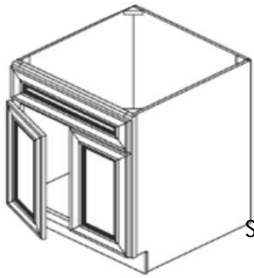
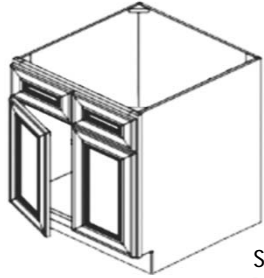
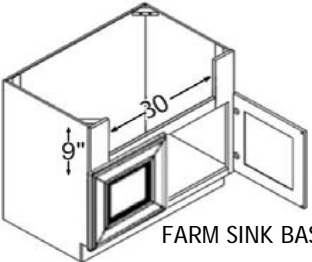
The depth of the cabinet is 18" and this number follows the the height 90 and the width is 24". When the depth is not 24" deep it will always be the last two numbers as in the following example.



JARLIN CABINETS

DS-DOVE WHITE SHAKER
 ES-EBONY SHAKER
 SO-SODA
 SG-STERLING
 SM-SMOKY GRAY

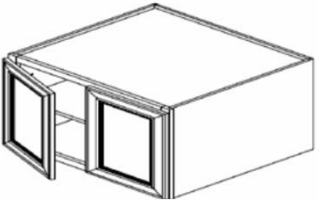
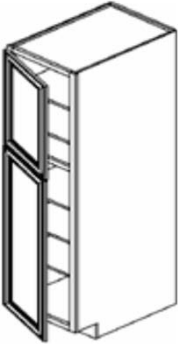
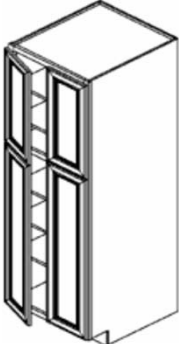
AB-ARIA BLUE
 CT-CHARLTON
 PE-PERLA
 NT-NEWPORT
 AL-AVALON

CABINET SPECIFICATION	WEIGHT		DIMENSION	AVAILABILITY										
	ITEM CODE	LB		W" x H" x D"	DS	ES	SO	SG	SM	AB	CT	PE	NT	AL
SINK BASE CABINET - DUMMY DRAWER FACE, 2 DOORS														
 <p>SINK BASE 24" - 30"</p>	SB24	43	24 x 34 ½ x 24	●	●	●	●	●	●	●	●	●	●	
	SB27	46	27 x 34 ½ x 24	●	●	●	●	●	●	●	●	●	●	
	SB30	50	30 x 34 ½ x 24	●	●	●	●	●	●	●	●	●	●	
SINK BASE CABINET - 2 DUMMY DRAWER FACES, 2 DOORS														
 <p>SINK BASE</p>	SB33	53	33 x 34 ½ x 24	●	●	●	●	●	●	●	●	●	●	
	SB36	55	36 x 34 ½ x 24	●	●	●	●	●	●	●	●	●	●	
	SB42	62	42 x 34 ½ x 24	●	●	●	●	●	●	●	●	●	●	
33" OR LARGER COMES WITH 2 DUMMY DRAWER FACES														
FARM SINK BASE CABINET - 2 DOORS														
 <p>FARM SINK BASE</p>	SB36-S	55	36 x 34 ½ x 24	●	●	●	●	●	●	●	●	●	●	
SB36-S - FARM SINK BASE-OPENING CAN BE CUT TO FIT 33 & 36														

JARLIN CABINETS

DS-DOVE WHITE SHAKER
 ES-EBONY SHAKER
 SO-SODA
 SG-STERLING
 SM-SMOKY GRAY

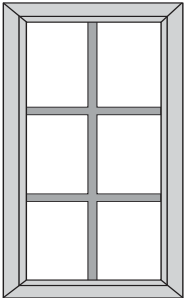
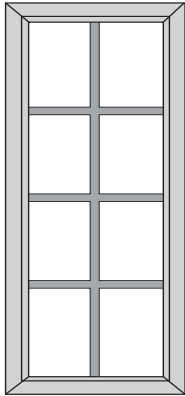
AB-ARIA BLUE
 CT-CHARLTON
 PE-PERLA
 NT-NEWPORT
 AL-AVALON

CABINET SPECIFICATION	WEIGHT		DIMENSION	AVAILABILITY									
	ITEM CODE	LB		W" x H" x D"	DS	ES	SO	SG	SM	AB	CT	PE	NT
WALL BRIDGE CABINETS - 2 DOOR, 1 SHELF													
	W302424	53	30 x 24 x 24	●	●	●	●	●	●	●	●	●	●
	W362424	60	36 x 24 x 24	●	●	●	●	●	●	●	●	●	●
SINGLE DOOR TALL PANTRY - 6 SHELVES ON 84"- 90", 7 SHELVES ON 96"													
	WP1884	114	18 x 84 x 24	●	●	●	●	●	●	●	●	●	●
	WP1890	117	18 x 90 x 24	●	●	●	●	●	●	●	●	●	●
	WP1896	125	18 x 96 x 24	●	●	●	●	●	●	●	●	●	●
BOTTOM DOOR 49-1/4", TOP DOOR 30", 36", 42" MATCH STANDARD WALL CABINETS													
DOUBLE DOOR TALL PANTRY - 6 SHELVES ON 84"- 90", 7 SHELVES ON 96"													
	WP2484	135	24 x 84 x 24	●	●	●	●	●	●	●	●	●	●
	WP2490	142	24 x 90 x 24	●	●	●	●	●	●	●	●	●	●
	WP2496	167	24 x 96 x 24	●	●	●	●	●	●	●	●	●	●
	WP3084	165	30 x 84 x 24	●	●	●	●	●	●	●	●	●	●
	WP3090	169	30 x 90 x 24	●	●	●	●	●	●	●	●	●	●
WP3096	195	30 x 96 x 24	●	●	●	●	●	●	●	●	●	●	
BOTTOM DOOR 49-1/4", TOP DOOR 30", 36", 42" MATCH STANDARD WALL CABINETS													

JARLIN CABINETS

DS-DOVE WHITE SHAKER
 ES-EBONY SHAKER
 SO-SODA
 SG-STERLING
 SM-SMOKY GRAY

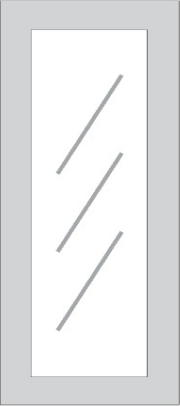
AB-ARIA BLUE
 CT-CHARLTON
 PE-PERLA
 NT-NEWPORT
 AL-AVALON

CABINET SPECIFICATION		WEIGHT		DIMENSION		AVAILABILITY							
	ITEM CODE	LB	W" x H" x D"	DS	ES	SO	SG	SM	AB	CT	PE	NT	AL
MULLION GLASS DOORS-TEXTURED GLASS													
 <p>30"H 36"H</p>	MULLION GLASS DOORS ONLY FOR CT, PE, NT & AL												
	WM1230	5	12 x 30 x 3/4							●	●	●	●
	WM1530	7	15 x 30 x 3/4							●	●	●	●
	WM1830	8	18 x 30 x 3/4							●	●	●	●
	WM2130	10	21 x 30 x 3/4							●	●	●	●
	WM1236	7	12 x 36 x 3/4							●	●	●	●
	WM1536	8	15 x 36 x 3/4							●	●	●	●
	WM1836	10	18 x 36 x 3/4							●	●	●	●
	WM2136	12	21 x 36 x 3/4							●	●	●	●
	WM1242	7	12 x 42 x 3/4							●	●	●	●
	WM1542	9	15 x 42 x 3/4							●	●	●	●
	WM1842	10	18 x 42 x 3/4							●	●	●	●
	WM2142	12	21 x 42 x 3/4							●	●	●	●
SIZES BELOW SOLD IN PAIRS													
 <p>42"H</p>	24" WIDE CABINETS USE 2 x WM12 DOORS												
	WM2730	14	27 x 30 x 3/4							●	●	●	●
	WM3330	18	33 x 30 x 3/4							●	●	●	●
	WM2736	17	27 x 36 x 3/4							●	●	●	●
	WM3336	19	33 x 36 x 3/4							●	●	●	●
36" WIDE CABINETS USE 2 x WM18 DOORS	WM2742	21	27 x 42 x 3/4							●	●	●	●
	WM3342	25	33 x 42 x 3/4							●	●	●	●
WM15 CAN BE USED ON WDC CABINETS, DOUBLE DOORS SIZES ARE IDENTICAL WITH SINGLE DOORS													

JARLIN CABINETS

DS-DOVE WHITE SHAKER
 ES-EBONY SHAKER
 SO-SODA
 SG-STERLING
 SM-SMOKY GRAY

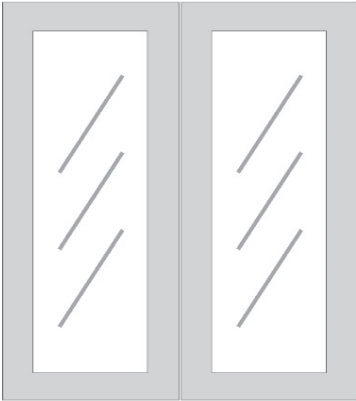
AB-ARIA BLUE
 CT-CHARLTON
 PE-PERLA
 NT-NEWPORT
 AL-AVALON

CABINET SPECIFICATION		WEIGHT		DIMENSION		AVAILABILITY								
	ITEM CODE	LB	W" x H" x D"	DS	ES	SO	SG	SM	AB	CT	PE	NT	AL	
GLASS DOORS-TEXTURED GLASS														
<p>OPEN FRAME GLASS DOORS ONLY FOR DS, ES, SO & SG</p> 	WM1212	4	12 x 12 x 3/4	●										
	WM1218	4	12 x 18 x 3/4	●		●	●							
	WM1512	5	15 x 12 x 3/4	●										
	WM1518	5	15 x 18 x 3/4	●		●	●							
	WM1812	6	18 x 12 x 3/4	●										
	WM1818	6	21 x 18 x 3/4	●		●	●							
	WM2112	7	21 x 12 x 3/4	●										
	WM2118	7	18 x 18 x 3/4	●		●	●							
	WM1230	5	12 x 30 x 3/4	●	●	●	●	●	●	●				
	WM1530	7	15 x 30 x 3/4	●	●	●	●	●	●	●				
	WM1830	8	18 x 30 x 3/4	●	●	●	●	●	●	●				
	WM2130	10	21 x 30 x 3/4	●	●	●	●	●	●	●				
	WM1236	7	12 x 36 x 3/4	●	●	●	●	●	●	●				
	WM1536	8	15 x 36 x 3/4	●	●	●	●	●	●	●				
	WM1836	10	18 x 36 x 3/4	●	●	●	●	●	●	●				
	WM2136	12	21 x 36 x 3/4	●	●	●	●	●	●	●				
	24" WIDE CABINETS USE 2 x WM12 DOORS	WM1242	7	12 x 42 x 3/4	●	●	●	●	●	●				
	WM1542	9	15 x 42 x 3/4	●	●	●	●	●	●					
30" WIDE CABINETS USE 2 x WM15 DOORS	WM1842	10	18 x 42 x 3/4	●	●	●	●	●	●					
	WM2142	12	21 x 42 x 3/4	●	●	●	●	●	●					
SIZES BELOW SOLD IN PAIRS														

JARLIN CABINETRY

DS-DOVE WHITE SHAKER
ES-EBONY SHAKER
SO-SODA
SG-STERLING
SM-SMOKY GRAY

AB-ARIA BLUE
CT-CHARLTON
PE-PERLA
NT-NEWPORT
AL-AVALON

CABINET SPECIFICATION	WEIGHT		DIMENSION	AVAILABILITY										
	ITEM CODE	LB		W" x H" x D"	DS	ES	SO	SG	SM	AB	CT	PE	NT	AL
GLASS DOORS-TEXTURED GLASS														
 <p>24" WIDE CABINETS USE 2 x WM12 DOORS</p> <p>30" WIDE CABINETS USE 2 x WM15 DOORS</p> <p>36" WIDE CABINETS USE 2 x WM18 DOORS</p>	OPEN FRAME GLASS DOORS ONLY FOR DS, ES, SO & SG	WM2712	7	27 x 12 x 3/4	•									
	WM2718	9	27 x 18 x 3/4	•		•	•							
	WM3312	12	33 x 12 x 3/4	•										
	WM3318	14	33 x 18 x 3/4	•		•	•							
	WM2730	14	27 x 30 x 3/4	•	•	•	•	•	•					
	WM3330	18	33 x 30 x 3/4	•	•	•	•	•	•	•				
	WM2736	17	27 x 36 x 3/4	•	•	•	•	•	•	•				
	WM3336	19	33 x 36 x 3/4	•	•	•	•	•	•	•				
	WM2742	21	27 x 42 x 3/4	•	•	•	•	•	•	•				
	WM3342	25	33 x 42 x 3/4	•	•	•	•	•	•	•				
WM15 CAN BE USED ON WDC CABINETS, DOUBLE DOORS SIZES ARE IDENTICAL WITH SINGLE DOORS														

Wood Cabinet Surfaces

As with all wood products, avoid excessive moisture. Jarlin cabinetry is designed for use inside the home or other buildings and is not intended for outdoor applications. Once your cabinets have been installed, wipe down all exteriors with a damp cloth to remove dust. Complete a small area at a time and wipe dry.

Cleaning Agents

Use a damp cloth when cleaning normal household spills. After wiping thoroughly, dry the surface with a lint-free cotton cloth. For stubborn stains, it may be necessary to use a mild detergent with warm water. Always dry the surface immediately. Never use abrasive cleaners, scouring pads or powdered cleansers. Do not allow oven cleaner to touch any part of the cabinet.

Everyday Care

It is important to wipe up spills and water marks as they occur. Give special attention to areas around the sink and dishwasher. Avoid draping damp or wet dish towels over the door of the sink base cabinet. Over time, this moisture can cause permanent water damage to the door.

Scratches, Gouges, & Nicks

A Touch-Up Kit is available to hide surface damage. Contact Jarlin Cabinetry to purchase the color-matched touch-up kit for your specific cabinets. Use the kit's touch-up pen to hide minor blemishes. Use the kits tinted putty to fill deeper scratches, gouges, or nicks. Detailed instructions are provided in each kit.

Avoid Light Damage

Exposure to direct sunlight tends to darken the color of natural wood products. Sunlight can also fade painted wood surfaces. Consider the use of draperies or blinds to protect your cabinets from direct sunlight. Please be aware that natural light and fluorescent light will fade the finish from its original color.

Avoid Heat Damage

The heat generated when using an oven's self-cleaning feature is much greater than during normal cooking. If this heat escapes from the oven, it can damage your cabinets. While this is a rare circumstance, you can minimize the risk of cabinet damage by opening cabinet door and drawers nearest the oven before using its self-cleaning feature.

Waxing & Polishing

Waxing is not recommended. Over time, waxing and polishing compounds may build up on the surface of your cabinet causing hazy, streaky, or a yellowed appearance to your cabinets finish.

Cleaning Glass Doors

Extra care is required when cleaning glass doors. Spray an ammonia-free glass cleaner on a clean cotton cloth or paper towel. Do not spray cleaner directly on the glass. The spray could run or seep behind the frame or mullions and cause damage.

POLICIES & GENERAL INFORMATION

Condition of Sale:

- It is the sole responsibility of the customer to review the accuracy of orders for style, color, size and quantity by way of order confirmation. Orders will not be processed until confirmation is received.
- Drawings ARE NOT CONSIDERED ORDERS. Only the sales order will be recognized as an approved order.
- We are a wholesale distributor and do not sell to the public. It is the responsibility of the customer to accompany and assist your clients in the selection process. You will need to supply your Rep with an accurate layout with measurements, a list of appliances, the height of the finished kitchen, all required moldings, and cabinet style. Your presence will still be required as your clients rarely understand the cabinet options and how they work in a design.
- All confirmed unassembled orders received by 3PM will ship the next business day (Monday-Friday) unless different date requested.
- All confirmed assembled orders received by 3PM will take 3-5 days (M-F) to be ready to pick up or delivered locally. Assembled cabinets are not available for LTL shipping.
- Jarlin holds no responsibility for assembly or installation errors.

Freight & Transportation Policy:

- The responsibility of Jarlin Cabinetry ceases upon delivery of product in good working order to transport companies and all product(s) are shipped at consignee's risk.
- If for any reason an order is shipping via ground at Jarlin's expense, Jarlin will pay for standard ground freight only.
- If for any reason an order is shipping via LTL at Jarlin's expense, Jarlin will pay for standard LTL freight only.
- If a customer requests an upgrade to a parcel shipment method, the customer will be charged the entire freight charge.
- 48" x 96" skin panels (BP4896) cannot be shipped LTL or UPS. These are for local pickup only. While FP4896 panels may be shipped LTL, Jarlin will only guarantee 42" of usable width. Up to 6" damage will be considered normal.

Mandatory Receiving Requirements for LTL or UPS Deliveries

Step 1: Check skid and loose piece count on Bill of Lading (BOL)/Delivery Receipt(DR), and match it to the actual amount on pallet and loose pieces on the pallet.

Step 2: Visually check pallet for damage. IMPORTANT: If the boxes appear to be damaged, take close-up and wide-angle photographs of the damage.

Step 3: YOU MUST note any damage or missing items on the carriers BOL/DR at the time of delivery. Any deliveries accepted and signed by customer without such notes will be considered complete and no claim can be made.

Step 4: Check packing slip (located on shrink-wrap of pallet) against the actual items on the pallet. Item numbers are located on the outside of each box

Step 5: Sign the Bill of Lading (BOL)/Delivery Receipt (DR). Keep one copy and save it for future reference, if needed. When you sign, you are accepting that delivery is complete and has no damage unless noted on BOL/DR at the time of delivery.

***Make a note on all copies of the BOL/DR that lists the items that are missing or signs of damage. Pictures of any damaged product and packaging are required. Please contact Jarlin to start claim process. Please submit with claim form to customerservice@jarlincabinet.com within 5 business days of delivery**

Mandatory Receiving Requirements for Warehouse pick-up or delivery: LAST PICK-UP MON-FRIDAY 4:30PM, 11:30AM Saturday.

Step 1: It is the responsibility of the customer to inspect all product(s) to verify all items are present and free of visible damage prior to loading vehicles of unassembled and assembled products.

Step 2: Visually check product for damage. IMPORTANT: If the boxes appear to be damaged, notify the warehouse manager of the damage.

Step 3: Check pick-up list against the actual items and quantity prior to loading their vehicles. Item numbers are located on the outside of each box.

Step 4: Customers are responsible for loading their own vehicles. There will be a \$40 loading fee if assistance is required.

Step 5: If something is incorrect or missing, notify the warehouse manager.

Step 6: Sign the pick-up list.

***ONCE THE PICK-UP LIST IS SIGNED, NO CLAIM CAN BE MADE FOR DAMAGE OR MISSING UNASSEMBLED OR ASSEMBLED CABINETS.**

***ASSEMBLED CABINETS CANNOT BE RETURNED UNDER ANY CIRCUMSTANCE. ANY CONCEALED DAMAGE ON ASSEMBLED CABINETS MUST BE REPORTED WITHIN 24 HOURS.**

- If returning items, please see the "Returned Goods Policy".
- In case of concealed missing or damaged parts, please see the "Concealed Missing, Damaged or Defective Parts Policy".

POLICIES & GENERAL INFORMATION

Delivery Service:

- Local delivery service is only available in Palm Beach, Broward, and Dade Counties.
 - There is a delivery fee of \$120 for Broward Counties and \$160 for Palm Beach & Dade County.
 - This is first floor delivery only. Deliveries above 1st floor WITH AN ELEVATOR, add \$80.00. Any others will be considered and quoted.
 - It is the responsibility of the customer to inspect all product(s) to verify all items are present and free of visible damage prior to signing for unassembled & assembled products.
 - If something is wrong or missing, notify the driver. Driver will return to warehouse and the replacement will be rescheduled for delivery.
 - Sign the delivery list. Concealed damage will not be picked up or delivered.
- *ONCE THE DELIVERY LIST IS SIGNED, NO CLAIM CAN BE MADE FOR DAMAGE OR MISSING UNASSEMBLED OR ASSEMBLED CABINETS.**
***ASSEMBLED CABINETS CANNOT BE RETURNED UNDER ANY CIRCUMSTANCE.**

Returned Goods Policy:

- Customers must complete the Merchandise Return Form and return to customerservice@jarlincabinet.com within 30 days of receipt of order.
- This form must be returned with the product and must be delivered to Jarlin within 10 business days from the date issued.
- No products shall be returned to Jarlin until a return authorization has been issued.
- Jarlin assumes no responsibility for items returned without proper authorization.
- All boxes containing the returned products must be unopened and undamaged. Under no circumstances can assembled products be returned.
- Customers are responsible for all freight and transportation charges associated with returns, and customers will assume all risk of loss and damage until the products are delivered to the Jarlin facility. Jarlin does not pick up returns.
- Upon receipt and inspection of the returned products, Jarlin will issue a credit for the invoice amount for qualifying returns and will incur a twenty percent (20%) restocking fee. No credit will be issued for lost or damaged items.

Concealed Missing, Damaged or Defective Parts Policy:

- Any damaged, missing or defective parts require the following to be resolved.
- Customer has 15 days from receipt of order to report any concealed damage.
- Check to make sure all parts are present and free of damage as it is taken out of the carton.
- Any missing or damaged parts must be photographed, take close-up and wide-angle photographs of the damage at this time before assembly.
- Send request with detailed description, sales order # and photo to customerservice@jarlincabinet.com.
- No parts will be replaced at no charge without sales order # and photo or after cabinet is assembled.
- Jarlin has 48 hours to review the request. Jarlin will notify customer at this time as to the outcome of the review. If the item(s) are to be replaced at Jarlin's expense, they will be shipped within 48 hours of notice.
- Jarlin will ship all replacement/missing orders standard UPS, 1st choice or standard LTL, 2nd choice.
- Jarlin cannot be held responsible for any cost including labor accrued during the installation of any of its products sold via any channels of distribution. This includes, but is not limited to, items that may be flawed or have been damaged in transit.

Disclaimers:

- Defects do not include items beyond reasonable control, including but not limited to, the following:
- Wood and Color Variations. Natural variations in the color, textures and grain of the wood used to manufacture cabinets or changes in the color of the wood caused by the natural aging process of the wood material is not considered defective.
- Wood Doors. Changes to wooden doors caused by changes in humidity, temperature and other local atmospheric conditions are not considered defects. Door warpage of up to 1/4" shall not be considered a defect. Note also that doors that appear warped may often be the result of improper installation.
- Painted Finishes. Changes (such as finish stress lines) caused using non-porous woods (such as birch) or by changes in humidity, temperature and other local atmospheric conditions are not considered defects.
- Glazed finishes are by nature uneven, and some edges and profiles will be larger than others. Glazed finishes may vary from item to item, resulting in variations in color, texture and finish. These types of variations are not considered defects.

POLICIES & GENERAL INFORMATION

Change Orders Policy:

- Jarlin will consider requests for minor changes or cancellations to an order in writing up to 24 hours after receipt of signed confirmation.
- A twenty-five dollar (\$25), non-refundable service fee will be charged to Buyer for each occurrence of changing an order.

Returned Checks:

- There will be a \$25 returned check fee for each occurrence.

Storage Fees:

- Purchased items not picked up by Buyer within three (3) business days after buyer receives Ready for Pickup notification are subject to storage fees, including, but not limited to, a daily fee of thirty dollars (\$30) for items stored at Jarlin Cabinetry.

Design Service:

- Jarlin provides a design service you can utilize.
- There is a fee for this service. The fee is at the discretion of Management.
- \$50 for limited design, \$100 for moderate design and \$150 for advanced design. This fee will be required before this service is provided.
- Jarlin holds no responsibility for improper measurements or incorrect cabinet sizes provided by customer.
- Drawings ARE NOT CONSIDERED ORDERS. Only the sales order will be recognized as an approved order.

Financial Responsibility:

- Jarlin Cabinetry requires payment of invoices upon receipt of goods.

Quotation of Price:

- All written quotations of price ("Quote") made by Jarlin Cabinetry will be valid for a period of thirty (30) days, without exception, from the date of the Quote generated by Jarlin Cabinetry. Under no circumstances will Jarlin Cabinetry honor verbal quotations of price.

Taxes:

- All sales tax, excise taxes, or other forms of taxes levied against this transaction shall be paid by Buyer over and above all other sums
- Buyer is or may become obligated to pay hereunder. These taxes are in addition to the purchase price of the products subject to an order.
- If you are exempt from tax, an original signed tax exemption certificate must be submitted to Jarlin Cabinetry. Without a valid signed tax exemption certificate on file at Jarlin Cabinetry all applicable taxes will be charged to the Buyer.

Governing Law:

- Venue and Jurisdiction All issues concerning the formation, performance, or interpretation of any contract regarding this sale shall be governed by the laws of the state of Florida, and any dispute between Jarlin Cabinetry and Buyer will be resolved in Florida the prevailing party in that dispute entitled to its costs and reasonable attorney's fees.

Severability of Terms:

- If any phrase, clause or provision shall be declared void, the validity of any other provisions shall not be affected there.

Display Rebate Program:

- Showroom Displays will be purchased at the regular price. Upon receipt of photo of installed display, Jarlin will provide a store credit for the difference of .30 multiplier discount off the list price and your current multiplier.

WARRANTY INFORMATION

THREE YEARS LIMITED WARRANTY

Jarlin Cabinetry warrants to original consumer purchase(s) for a period of three years from the original date of purchase that all other components of Jarlin Cabinetry shall be free from defects in material and workmanship under normal use.

Jarlin Cabinetry warrants to original consumer purchaser(s) for as long as they own their home that the drawer box, drawer glides, and hinges used in the manufacture of Jarlin Cabinetry products shall be free from defects in material and workmanship under normal use.

These warranties are only applicable to products used in residential applications within the United States and are non-transferable to subsequent owners.

Should defects in material or workmanship exist during the applicable warranty period in any Jarlin Cabinetry will elect at its discretion to either repair or replace the defective material or component free of charge, This warranty covers only parts and materials of the products supplied by Jarlin Cabinetry. Not covered under this warranty are countertops, appliances, plumbing fixtures, etc. or the costs, including labor, to remove and reinstall materials and related components such as fixtures, appliances, etc.

This warranty shall become void if the cabinets are in any way modified, improperly installed, or damaged prior to or during the installation. This also disclaims products utilized in any application other than the standard. Furthermore, this warranty will not apply to cabinets damaged by misuse, neglect, abuse, acts of God, exposure to moisture, exposure to extreme temperatures or the effects of normal wear and tear.

Natural woods vary in color, characteristics, and exhibit subtle changes as they age. For example, wood joints may eventually have visible cracking around the joint area and cabinet color may darken or lighten over time.

Sunlight, smoke, household cleaners, and other environmental conditions may also affect the color match over time. These variations are considered to be the nature of the material in relation to their environment exposure and are not covered under this warranty.

Jarlin Cabinetry reserves the right to alter design, specifications and material without obligation to make similar changes to products previously manufactured.

The repair(s) or replacement(s) are contingent upon the current product offerings of style and construction options within the Jarlin Cabinetry product at the time of the warranty claim. If a warranty claim is filed after an Jarlin Cabinetry product becomes obsolete, Jarlin Cabinetry reserves the right to honor the warranty in one of the following fashions:

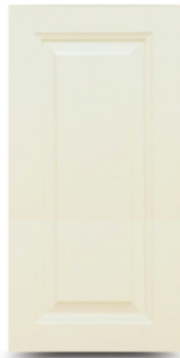
- 1)** To replace the affected component with a new component with a new component of the same style.
- 2)** To replace the affected component and any other component(s) in the residential application to achieve a uniform appearance with a similar and comparable and comparable product style of the originally purchased style.

If components are replaced, Jarlin Cabinetry cannot guarantee that the finish of these replacement(s) will exactly match the finish and appearance of the components in the residential application. This is due to the changes that occur during woods natural aging process, affecting its color and grain.

THIS WARRANTY IS THE EXCLUSIVE WARRANTY OF JARLIN CABINETRY AND IS IN LIEU OF ALL OTHER WARRANTIES, EXPRESSED OR IMPLIED, INCLUDING THE IMPLIED WARRANTIES OF MERCHANTABILITY AND FITNESS FOR A PARTICULAR PURPOSE.

This warranty gives you specific legal rights and you may have other rights, which vary from state to state. Some states do not allow the exclusion of limitation or consequential damages, so the above limitations or exclusions may not apply to you.

To obtain replacement(s) under Jarlin Cabinetry's Three Year Limited warranty, take clear pictures of the part that needs to be replaced and Email it to customerservice@jarlincabinet.com. A dated sales receipt as proof of purchase is required to use this warranty.



Avalon-AL



Newport-NT



Perla-PE



Charlton-CT



Ebony-ES



Dove White-DS



Sterling-SG



Soda-SO



Smoky Gray-SM



Aria Blue-AB



JARLIN

CABINETRY

Visit www.jarlincabinet.com for more information.

Jarlin Cabinetry reserves the right to change or modify cabinets as part of its ongoing development.
 Note: Due to printing limitations, color pictures cannot be guaranteed to match actual cabinet materials.
 Please check with your dealer for actual door samples when making your selection.
 Copyright © 2021 Jarlin Cabinetry